

13

PRECIADOS

Hines

Horizontal Unit



Floor	Built (m ²)
First Floor	463,73
Ground Floor	341,51
Basement	601,62
Total: 1406,86	

13

PRECIADOS

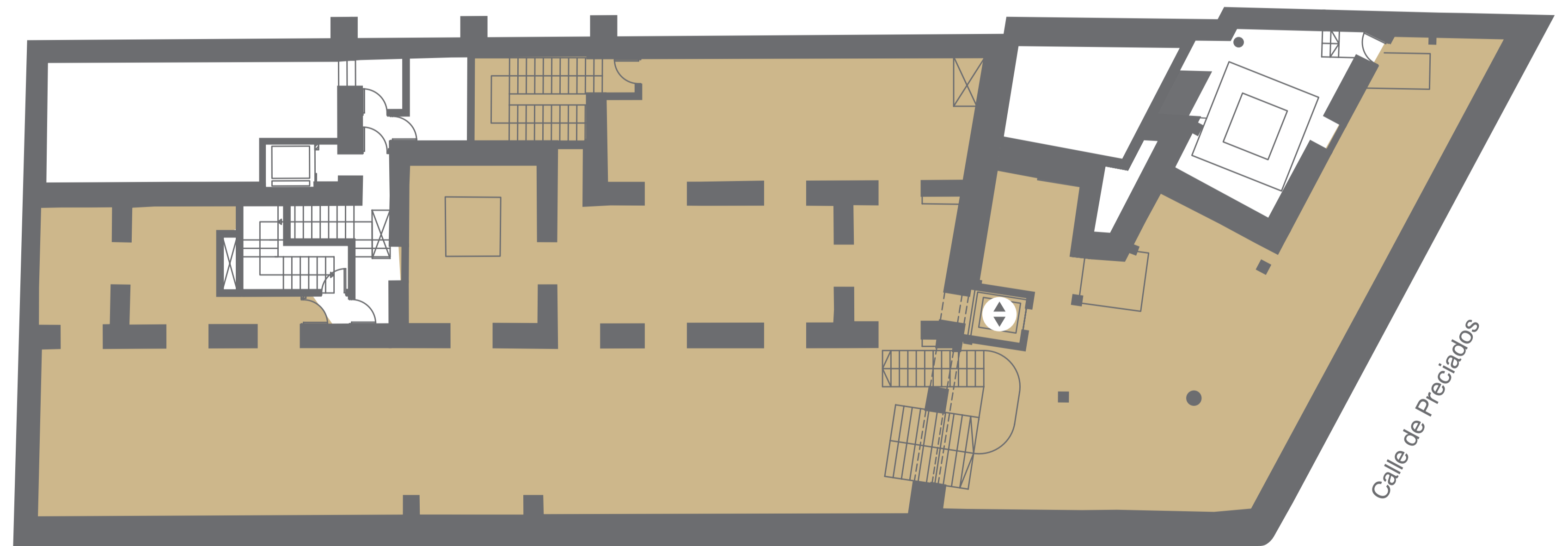
Hines

Horizontal Unit



Built Area (m ²)	Horizontal Unit
PR13	169,01
MV5	432,61
Total	601,62

Basement



Calle Maestro Victoria

Calle de Preciados

— Retail area ↑ Entrance ↕ Stairs Escalator ⬆ Elevator Ground Floor

13

PRECIADOS

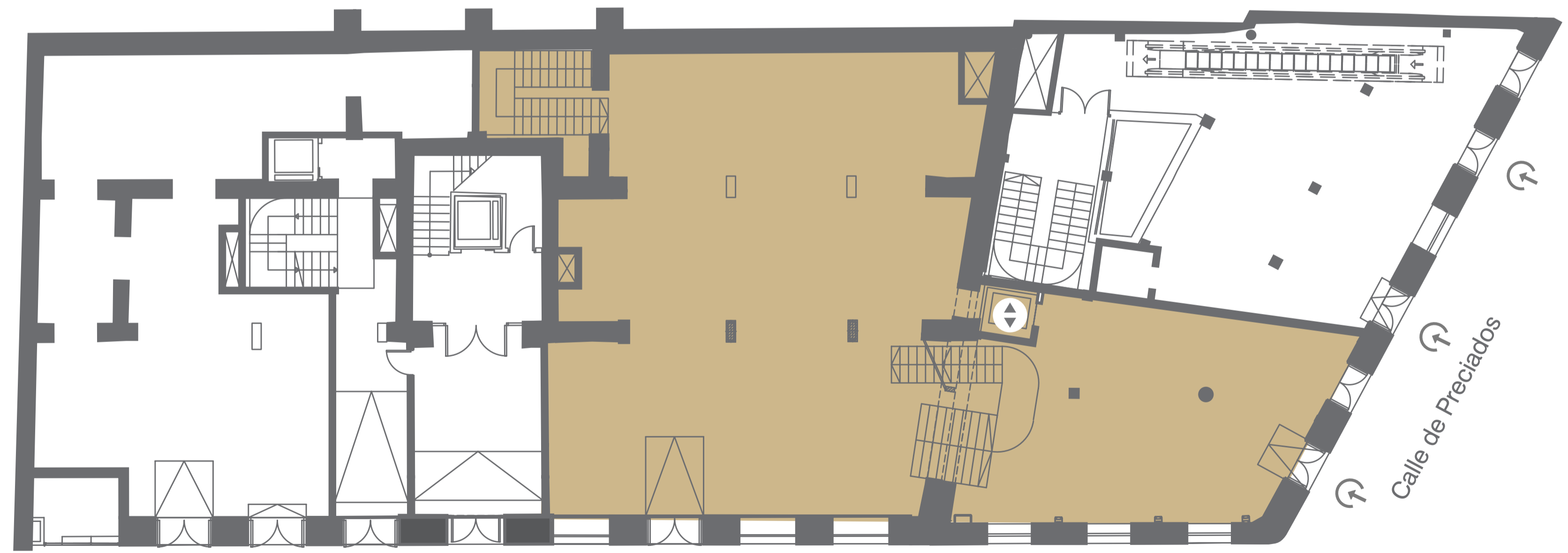
Hines

Horizontal Unit

Ground Floor



Built Area (m ²)	Horizontal Unit
PR13	97,25
MV5	244,26
Total	341,51



Retail area
 Entrance
 Stairs
 Escalator
 Elevator
 Ground Floor

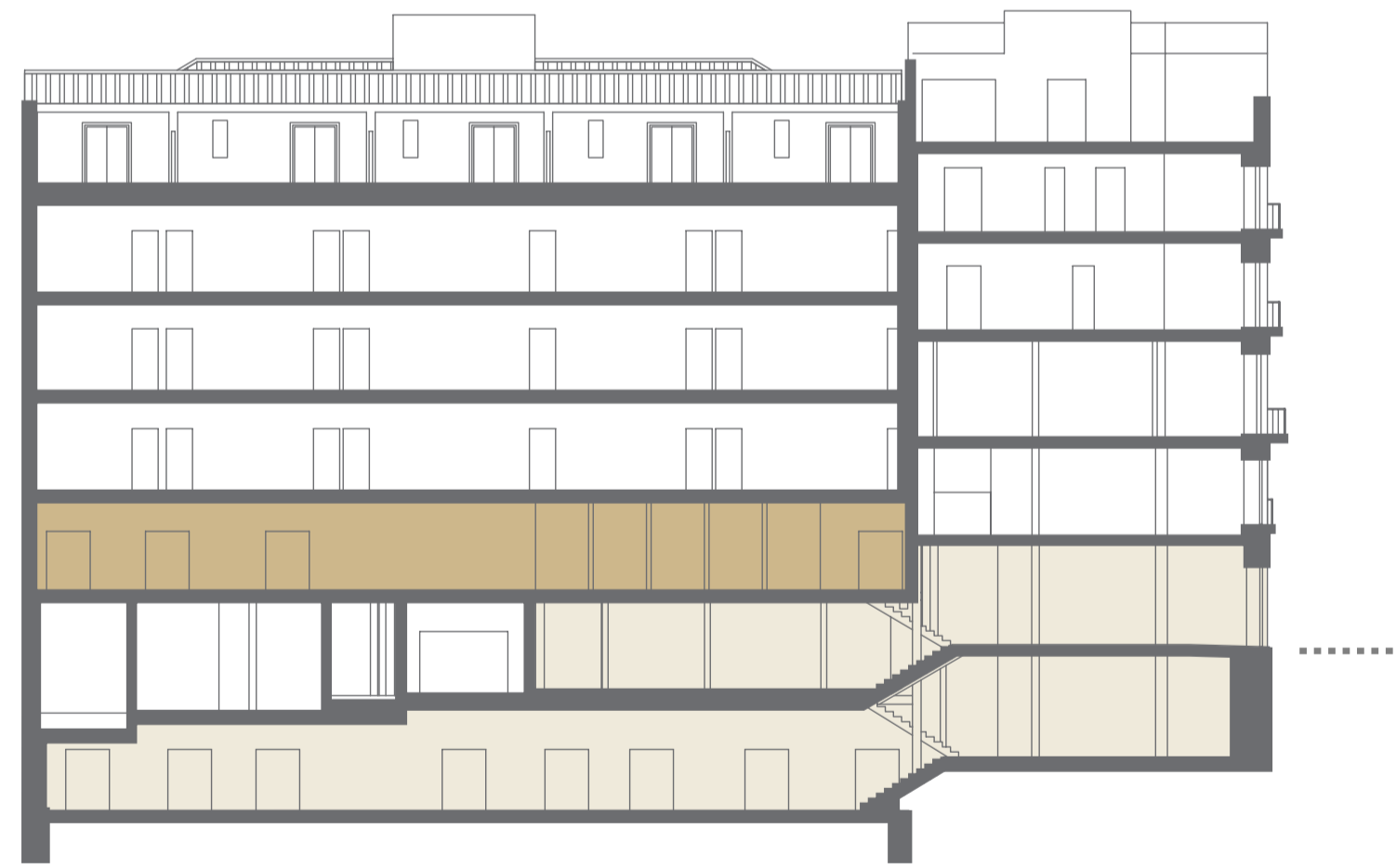
13

PRECIADOS

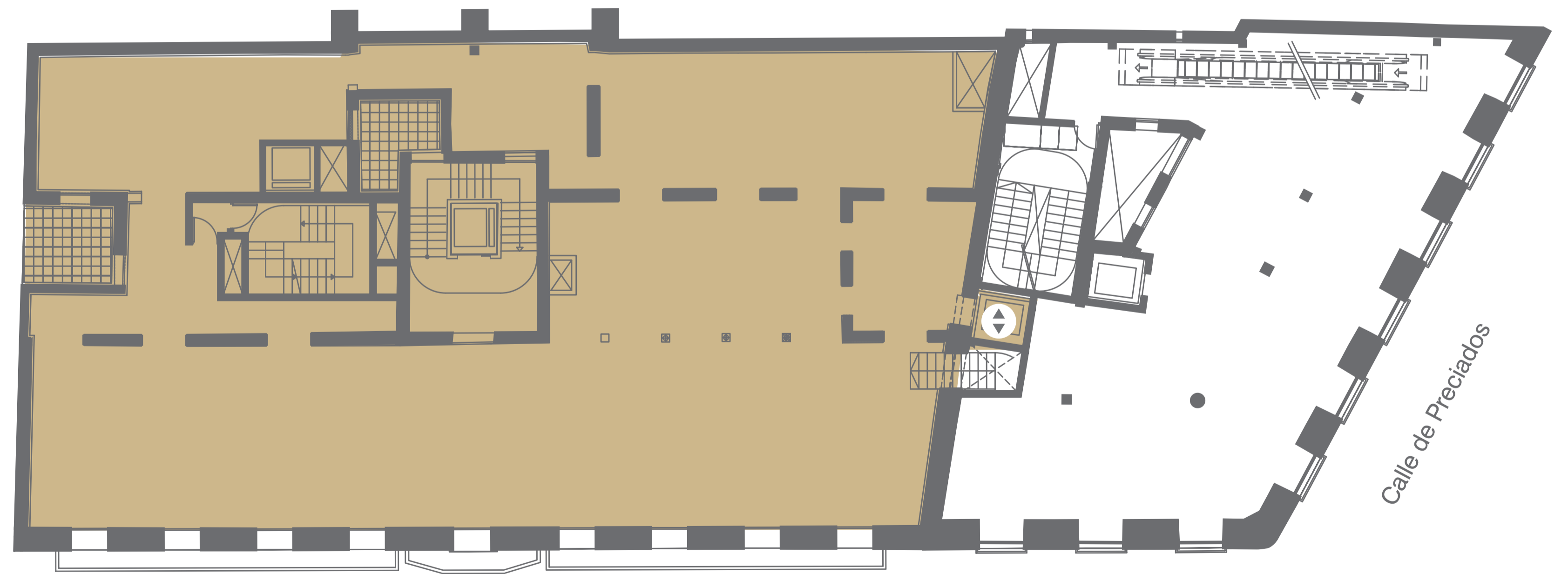
Hines

Horizontal Unit

First Floor



Built Area (m ²)	Horizontal Unit
PR13	8,06
MV5	455,67
Total	463,73



Calle Maestro Victoria

Calle de Preciados

— Retail area ↑ Entrance ↗ Stairs Escalator ⬆ Elevator - - - - Ground Floor