

13

PRECIADOS

Hines

The Building



Floor	Built (m ²)
Fifth Floor	165,57
Fourth Floor	247,07
Third Floor	247,63
Second Floor	247,63
First Floor	703,3
Ground Floor	491,89
Basement	601,62

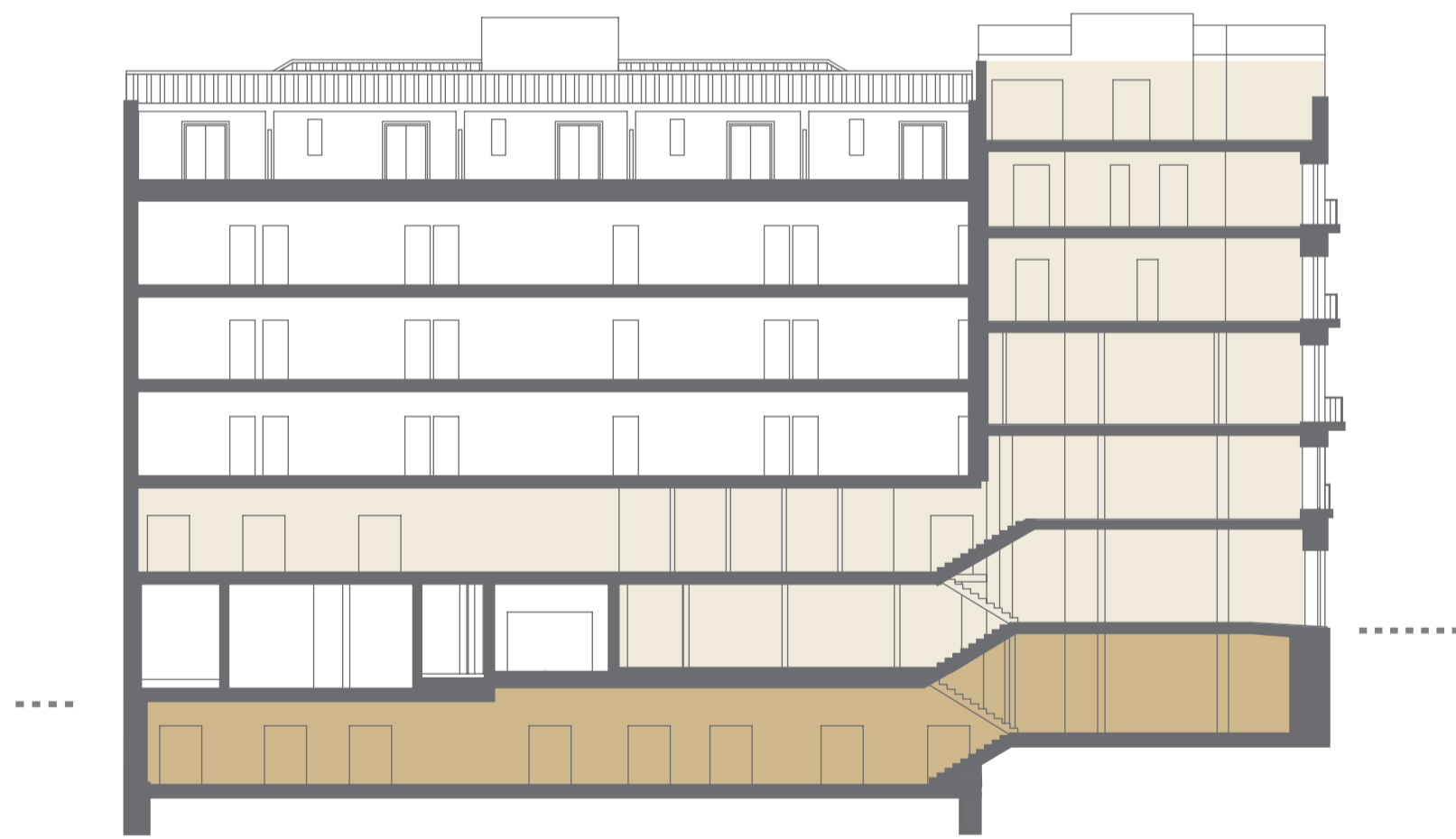
Total: 2704,71



PRECIADOS

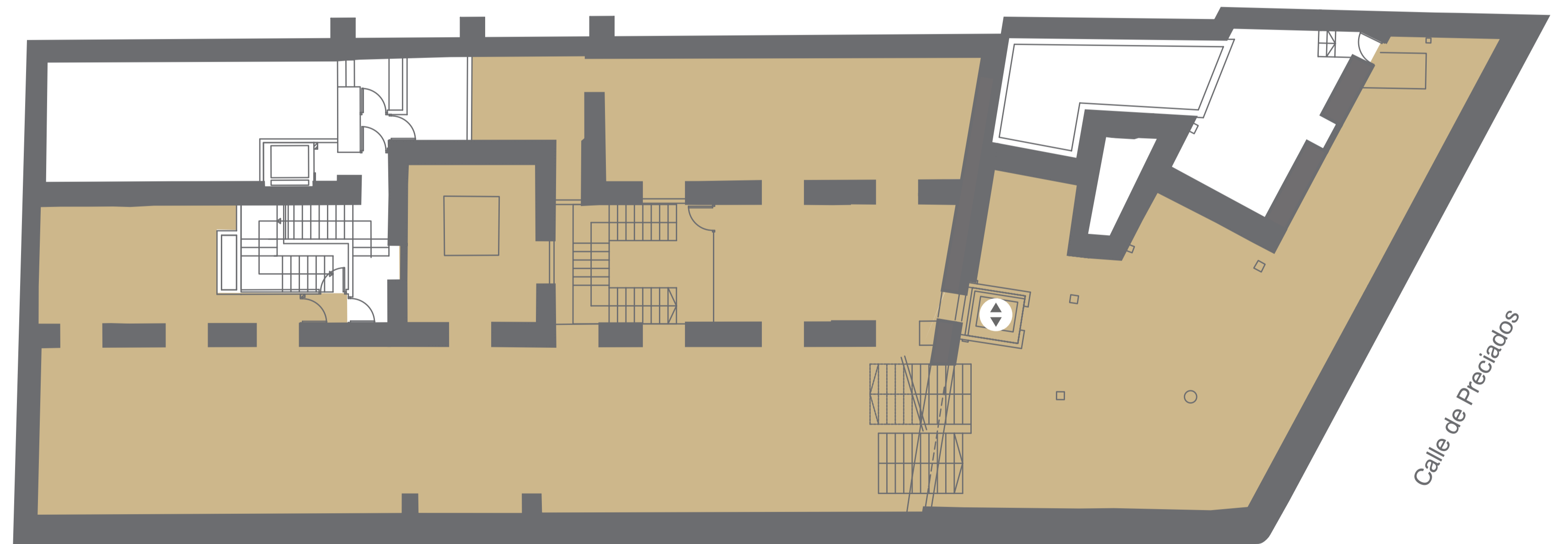
Hines

The Building



Built Area (m ²)	The Building
PR13	169,01
MV5	432,61
Total	601,62

Basement



Calle Maestro Victoria

Calle de Preciados

Retail area
 Entrance
 Stairs
 Escalator
 Elevator
 Ground Floor

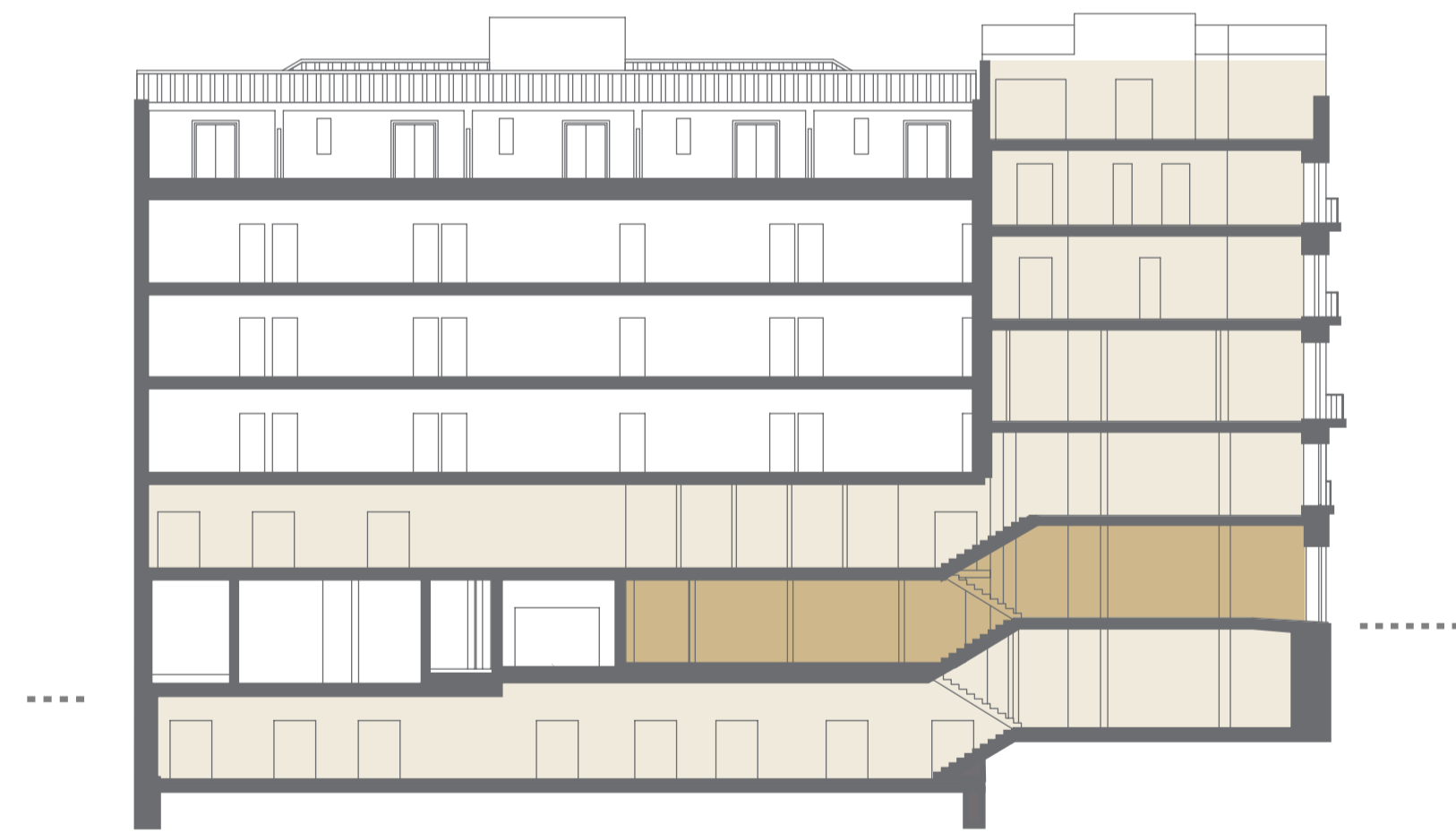


PRECIADOS

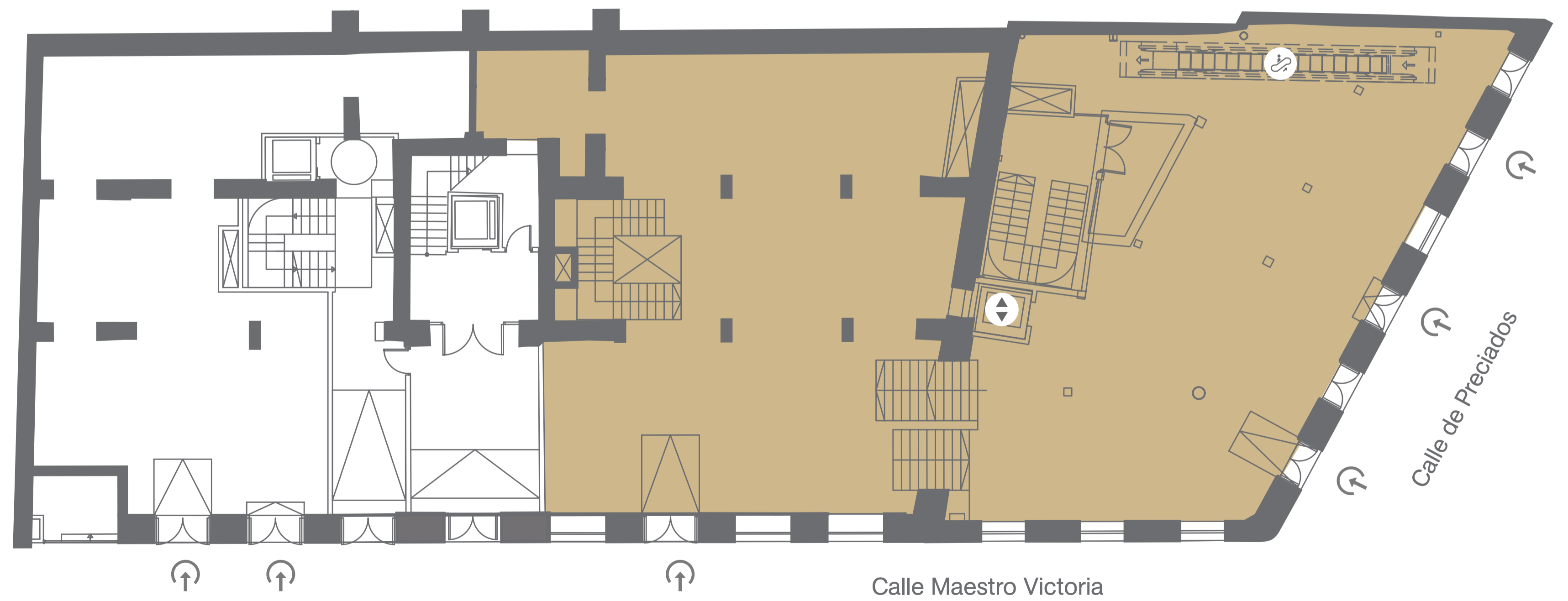
Hines

The Building

Ground Floor



Built Area (m ²)	The Building
PR13	247,63
MV5	244,26
Total	491,89



Retail area
 Entrance
 Stairs
 Escalator
 Elevator
 Ground Floor

13

PRECIADOS

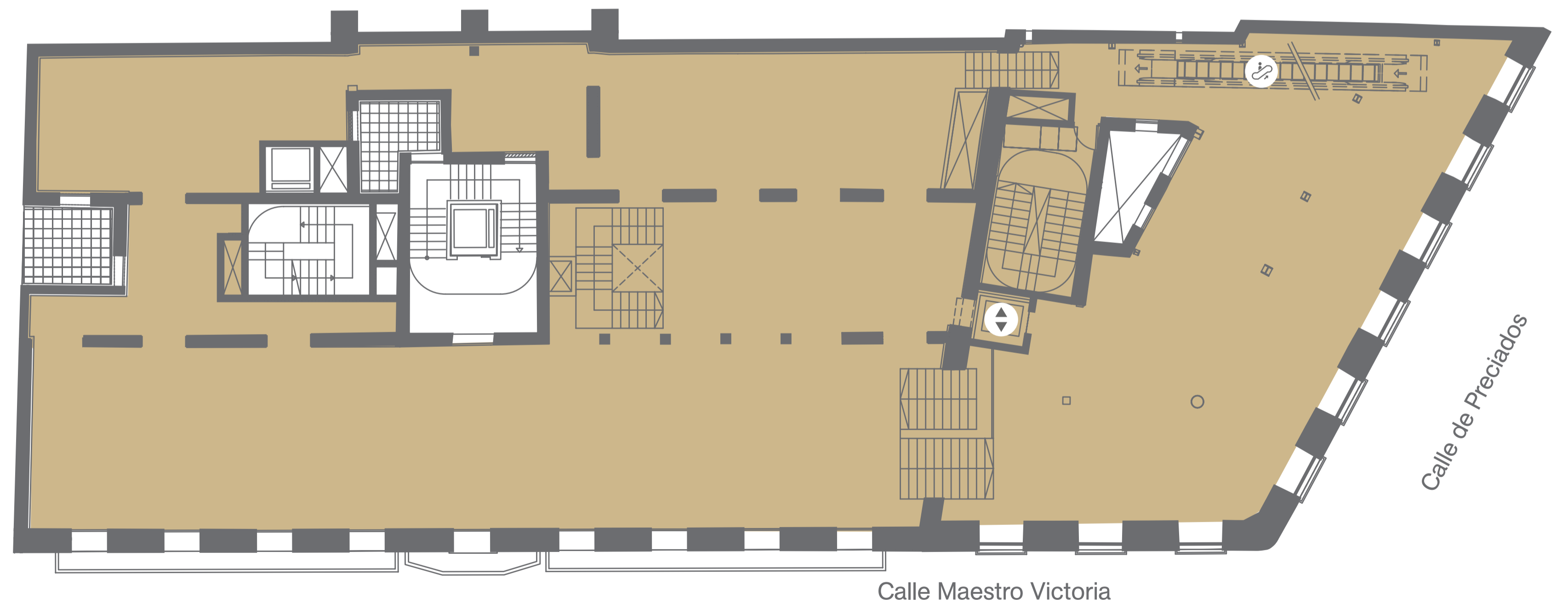
Hines

The Building

First Floor



Built Area (m ²)	The Building
PR13	247,63
MV5	455,67
Total	703,3



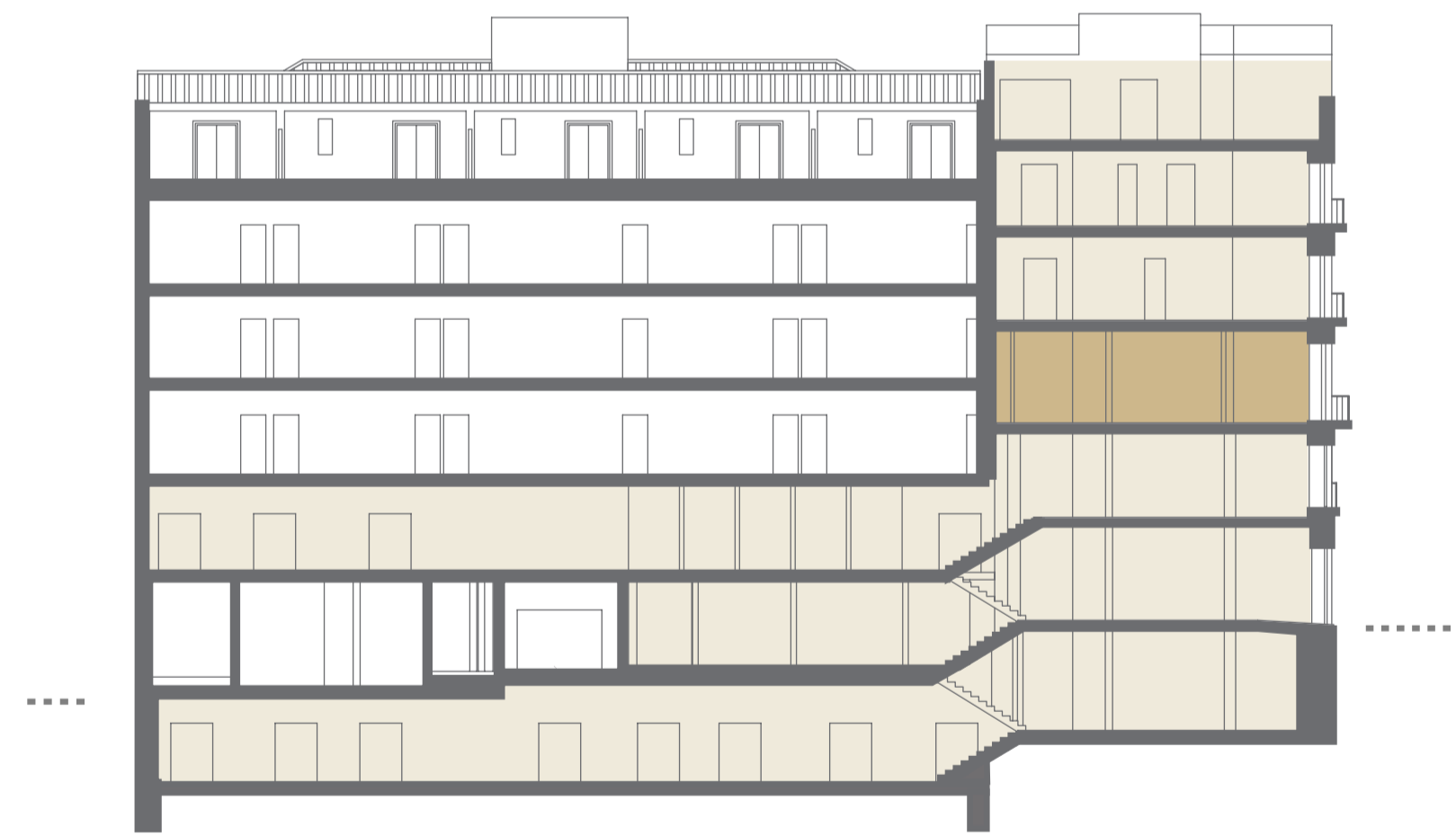
— Retail area ↑ Entrance ↕ Stairs Escalator ◆ Elevator - - - - Ground Floor

13

PRECIADOS

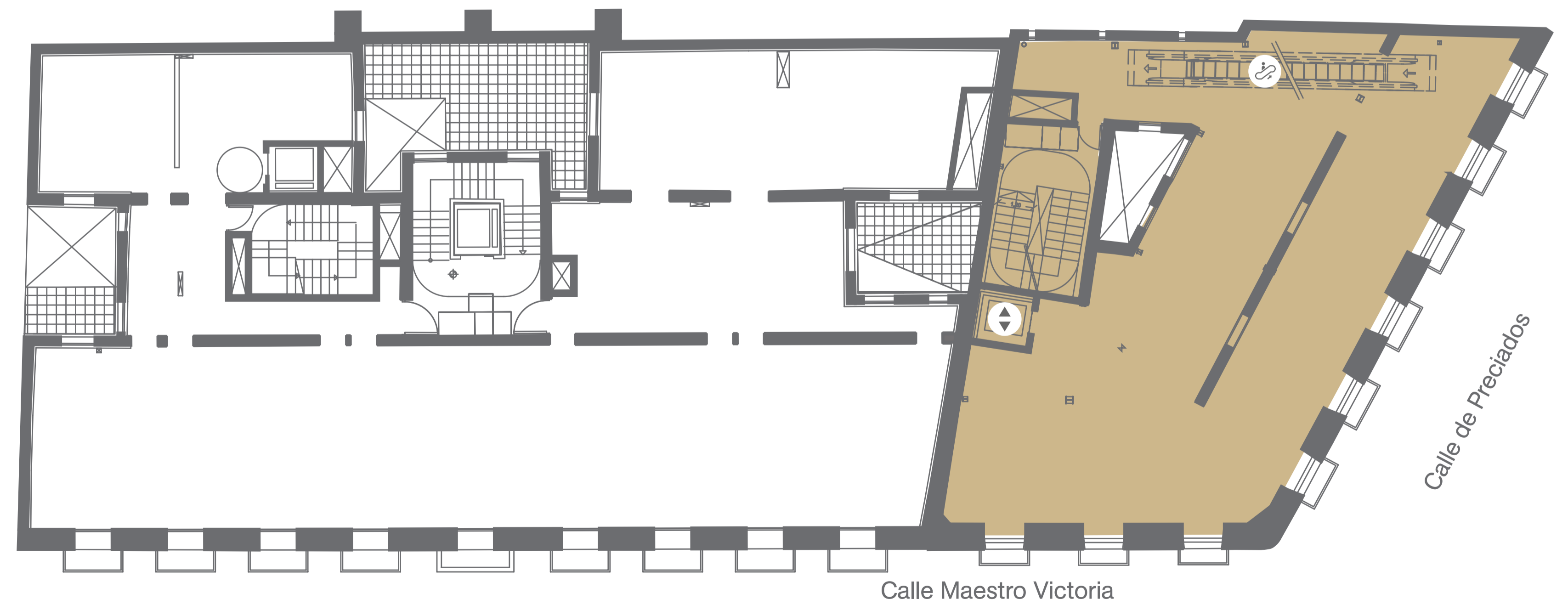
Hines

The Building



Built Area (m ²)	The Building
PR13	247,63
MV5	0
Total	247,63

Second Floor



Retail area
 Entrance
 Stairs
 Escalator
 Elevator
 Ground Floor

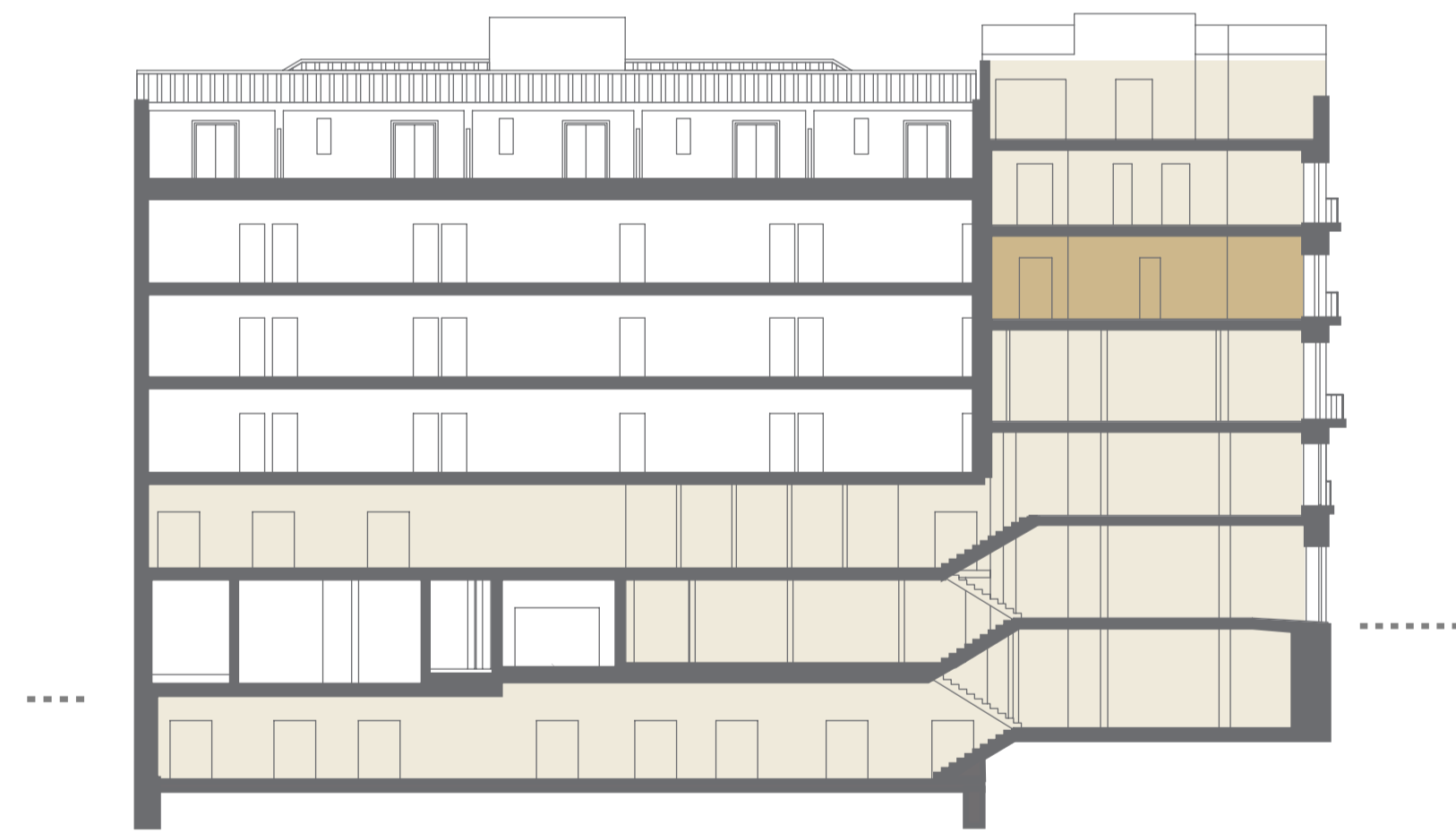
13

PRECIADOS

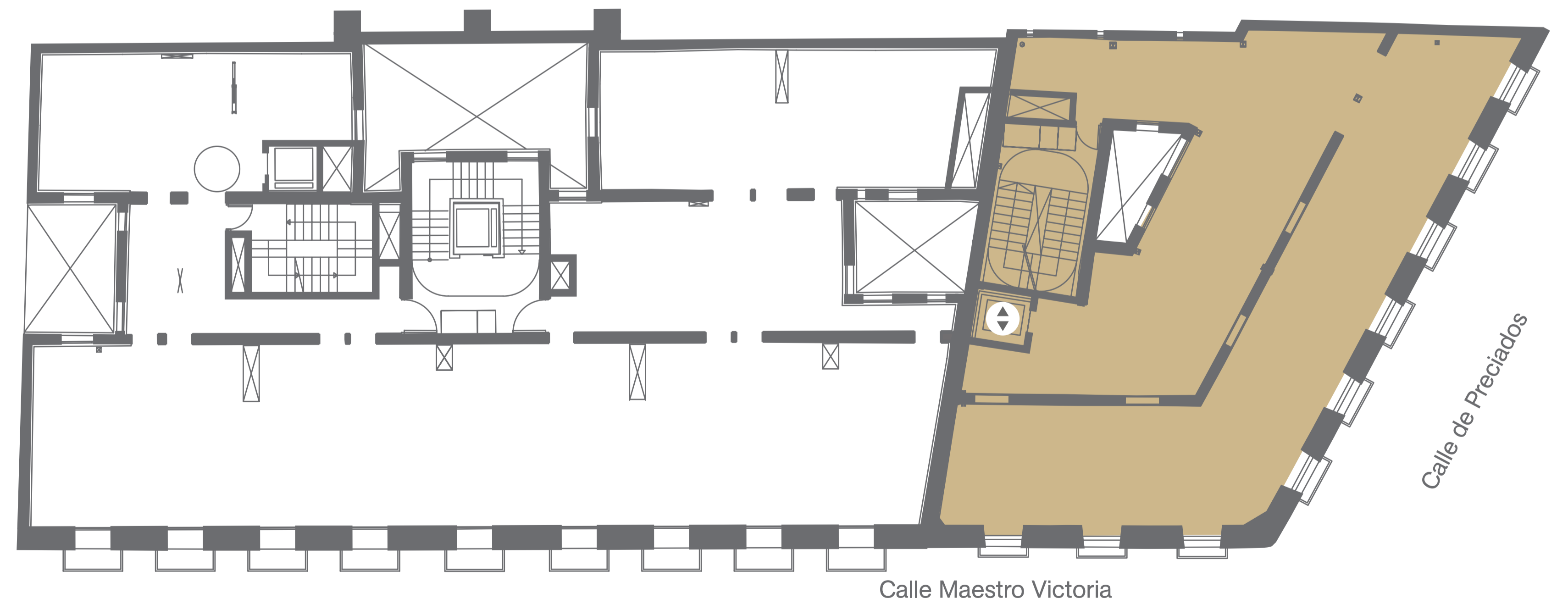
Hines

The Building

Third Floor



Built Area (m ²)	The Building
PR13	247,63
MV5	0
Total	247,63



— Retail area ↑ Entrance ↕ Stairs Escalator ◆ Elevator - - - - Ground Floor

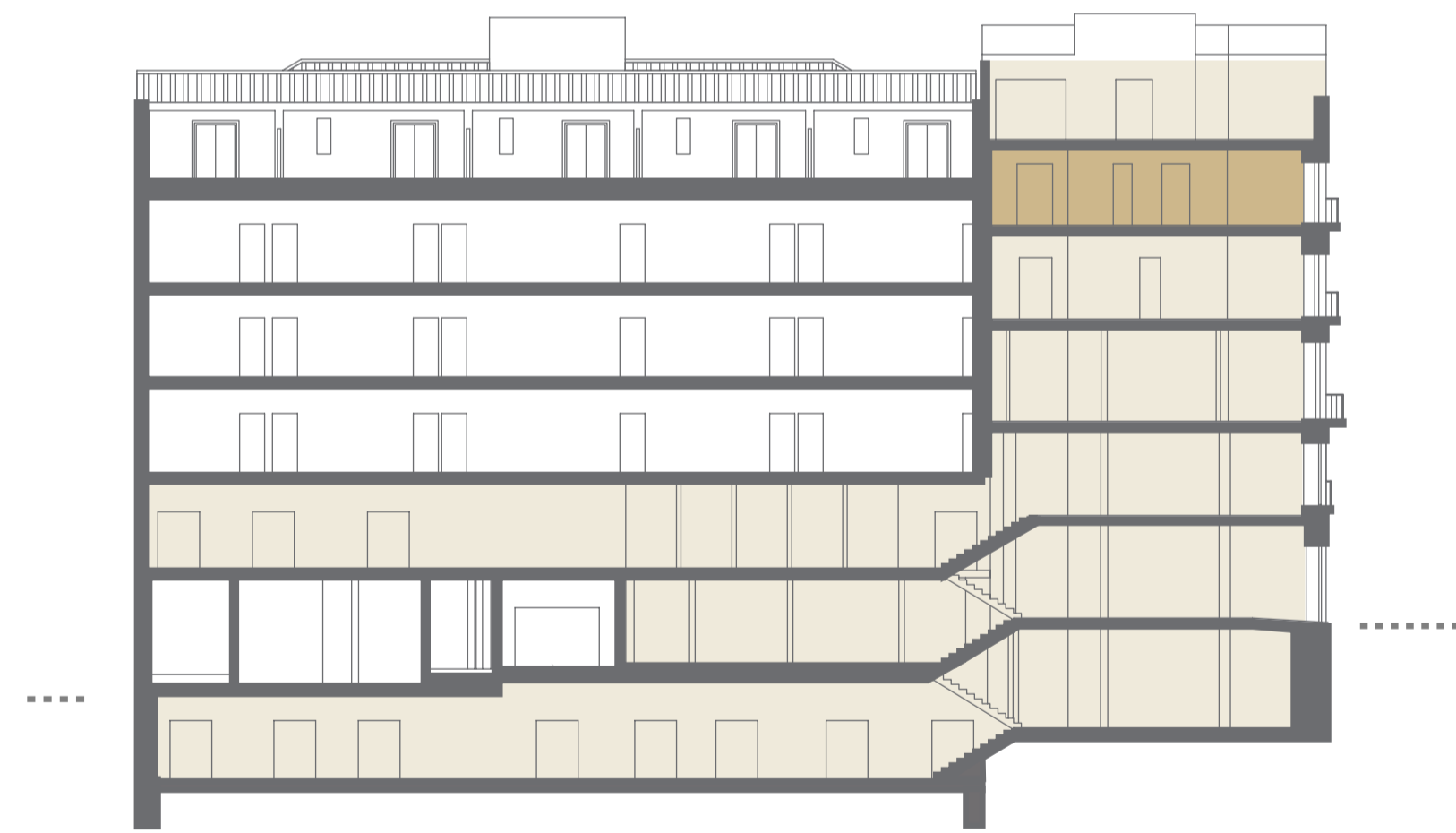
13

PRECIADOS

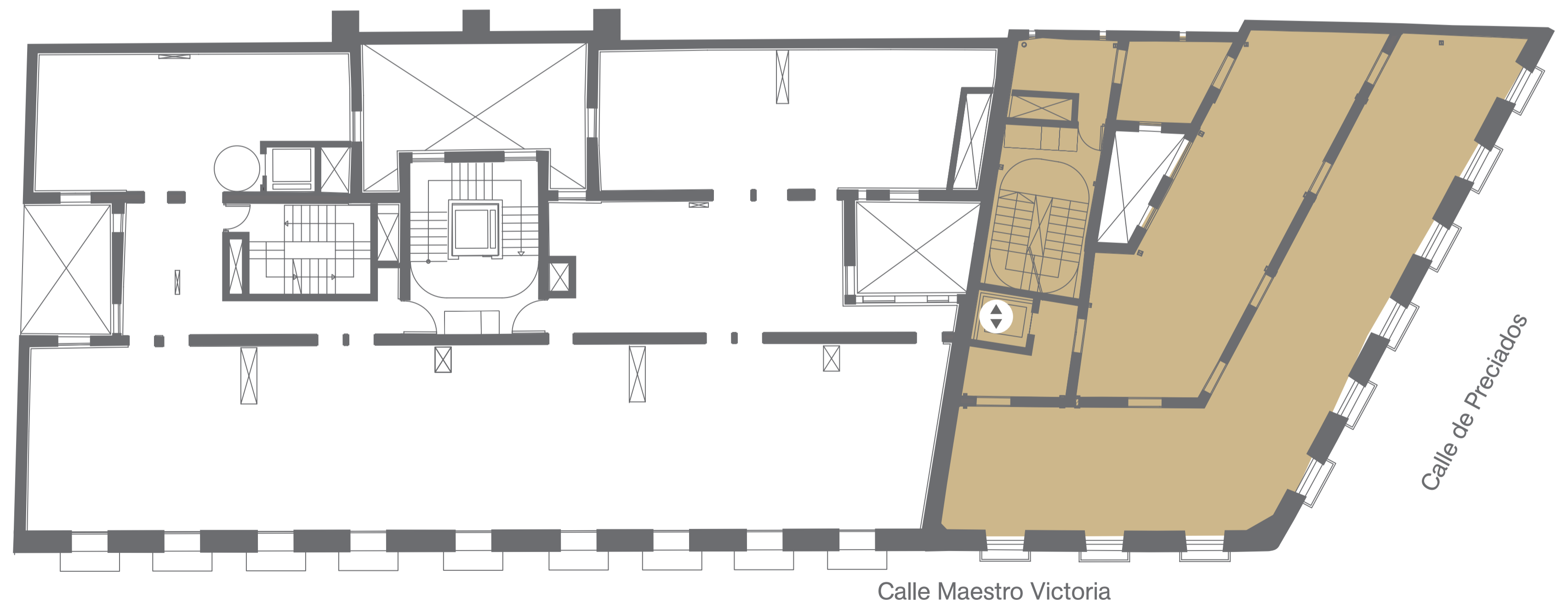
Hines

The Building

Fourth Floor



Built Area (m ²)	The Building
PR13	247,07
MV5	0
Total	247,07



— Retail area ↑ Entrance ↕ Stairs Escalator ◆ Elevator - - - - Ground Floor

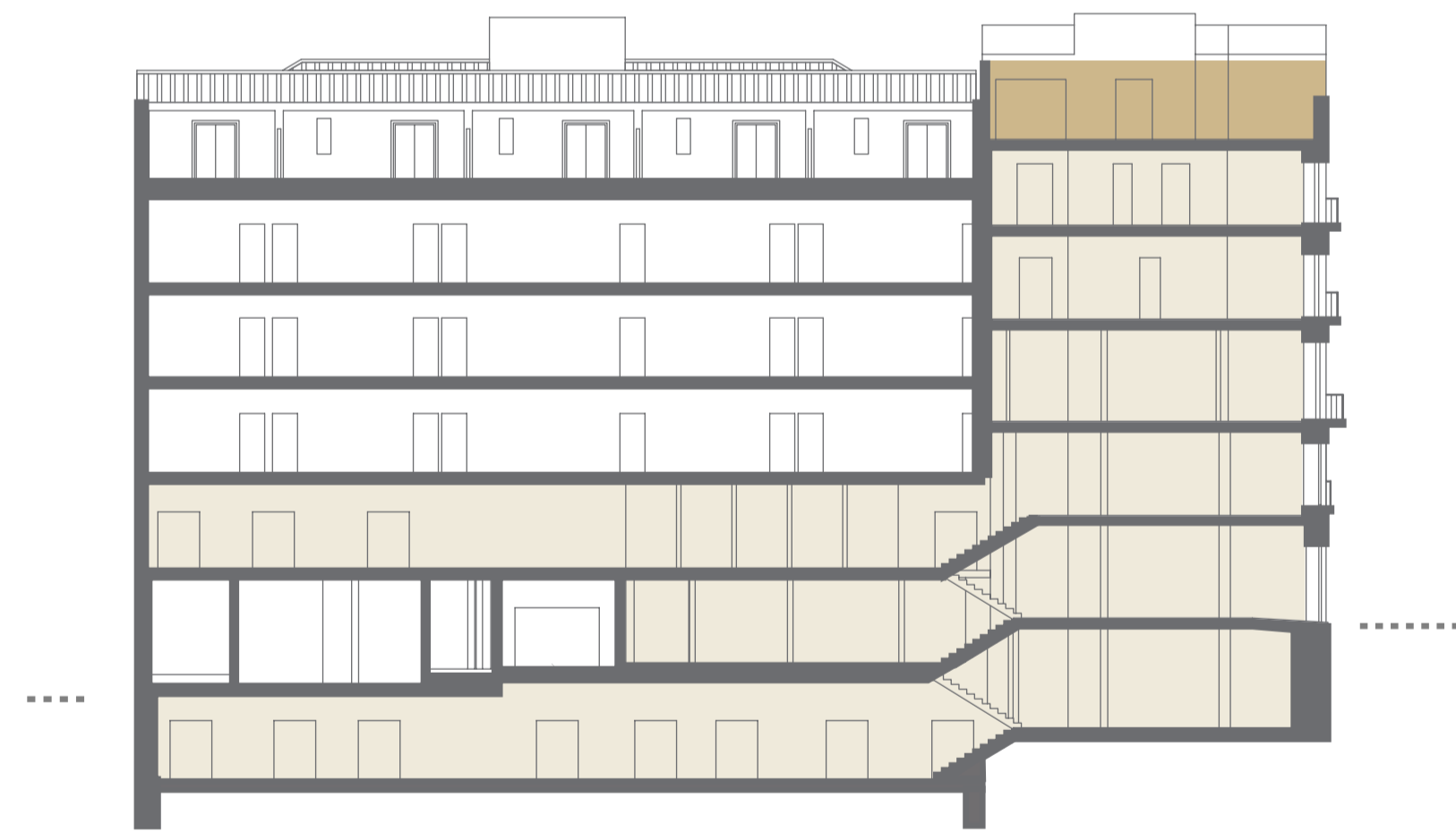
13

PRECIADOS

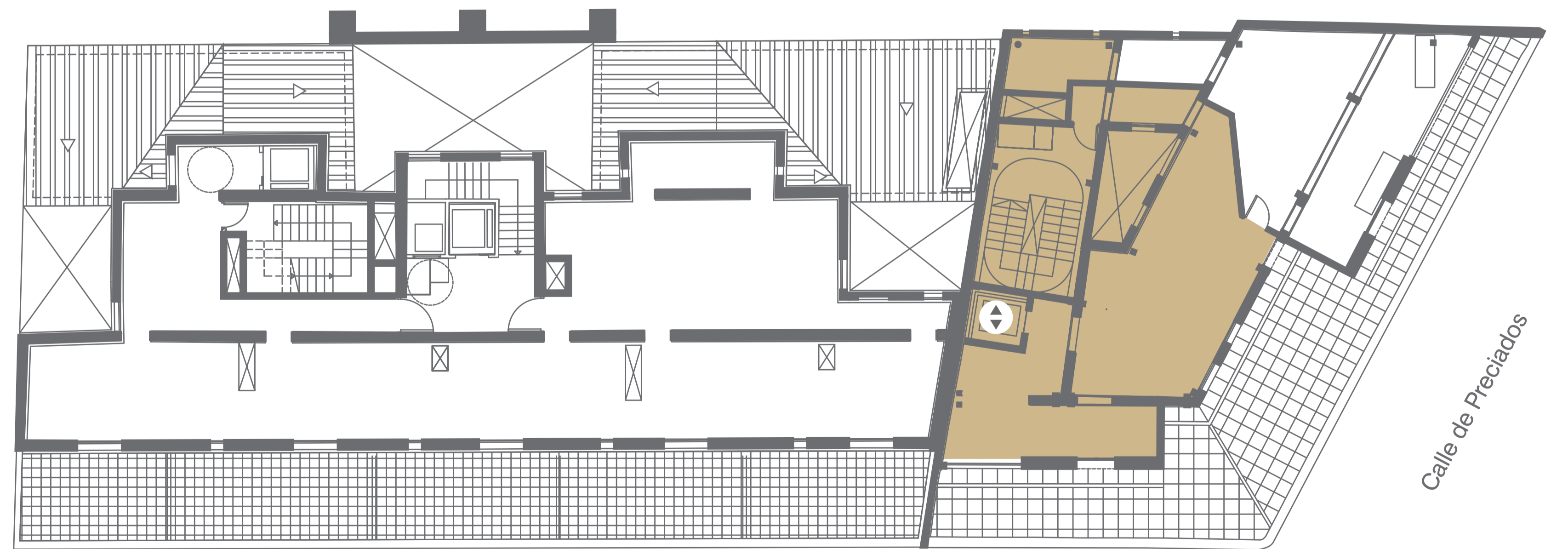
Hines

The Building

Fifth Floor



Built Area (m ²)	The Building
PR13	165,57
MV5	0
Total	165,57



Calle Maestro Victoria

Calle de Preciados

Retail area
 Entrance
 Stairs
 Escalator
 Elevator
 Ground Floor