

13

PRECIADOS

Hines

Vertical Unit



Floor	Built (m ²)
Fifth Floor	106,6
Fourth Floor	247,07
Third Floor	247,63
Second Floor	247,63
First Floor	239,58
Ground Floor	150,38
Total:	1238,89

13

PRECIADOS

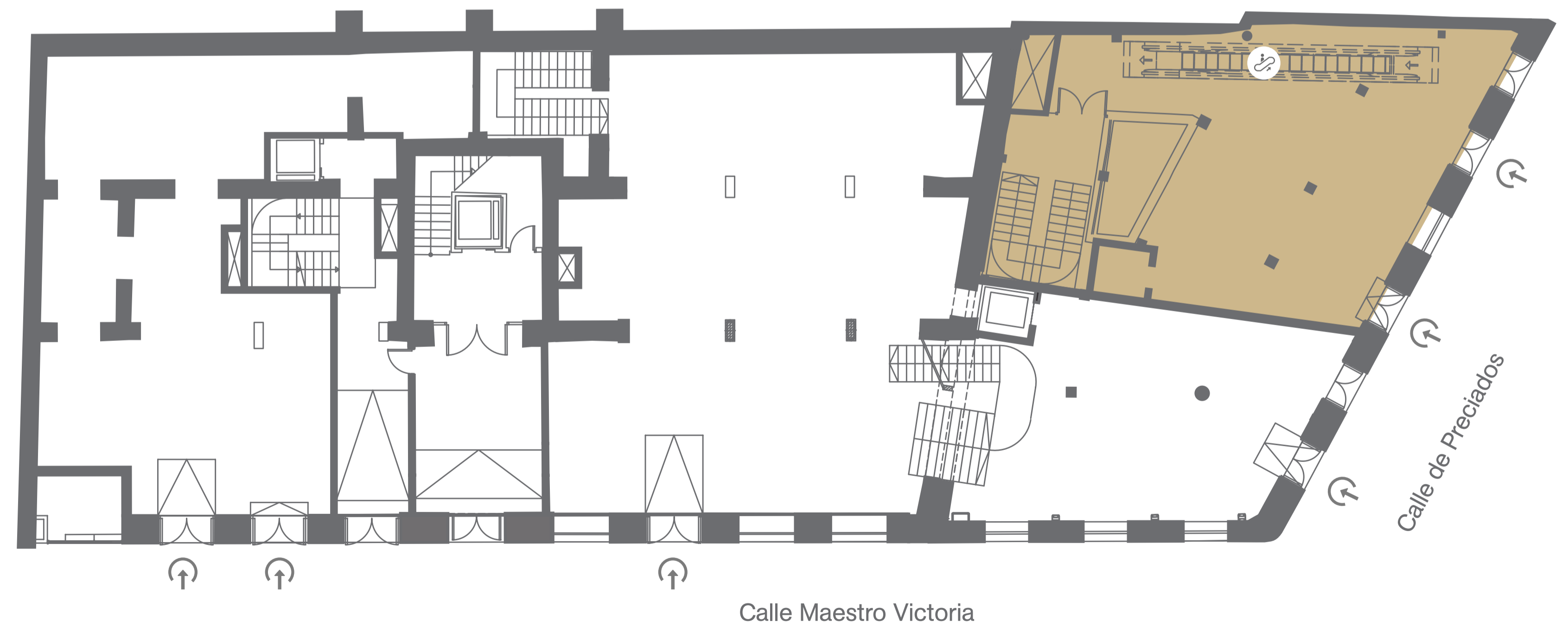
Hines

Vertical Unit

Ground Floor



Built Area (m ²)	Vertical Unit
PR13	150,38
Total	150,38



— Retail area ↑ Entrance ↗ Stairs 🌀 Escalator ⬆ Elevator - - - - Ground Floor

13

PRECIADOS

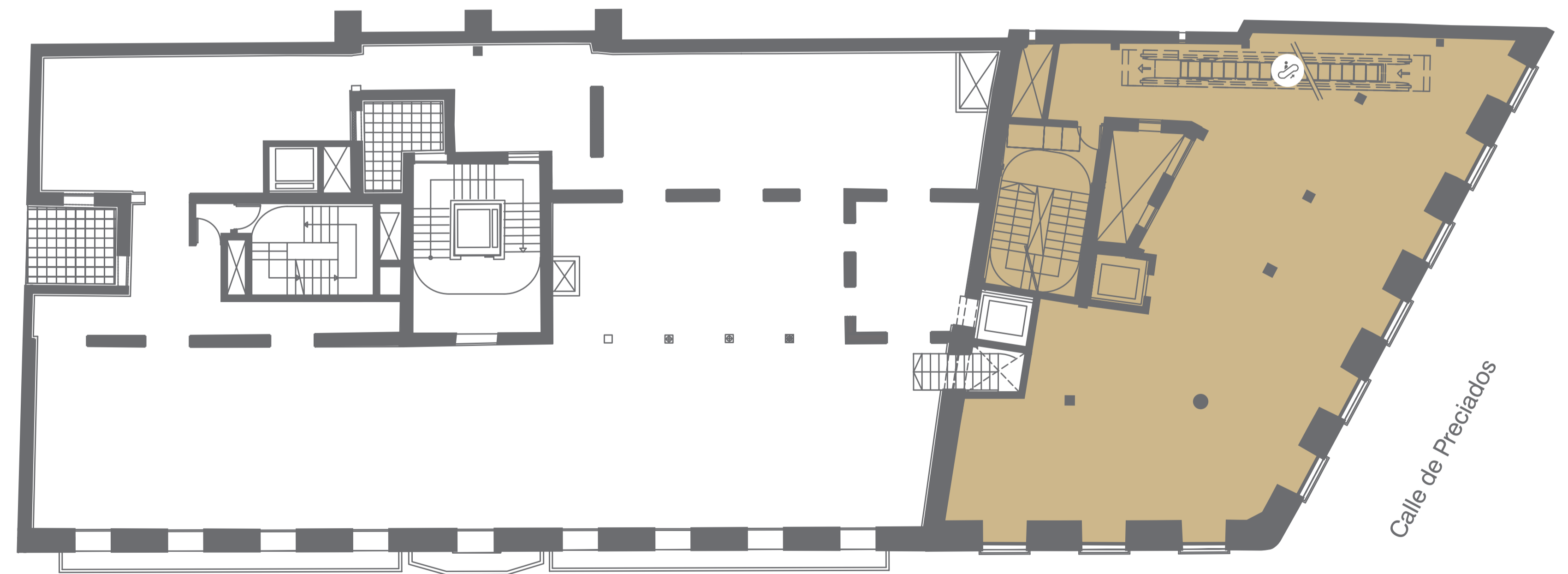
Hines

Vertical Unit

First Floor



Built Area (m ²)	Vertical Unit
PR13	239,58
Total	239,58



Calle Maestro Victoria

Calle de Preciados

— Retail area ↕ Entrance ↗ Stairs 🌀 Escalator ⬆ Elevator - - - - Ground Floor

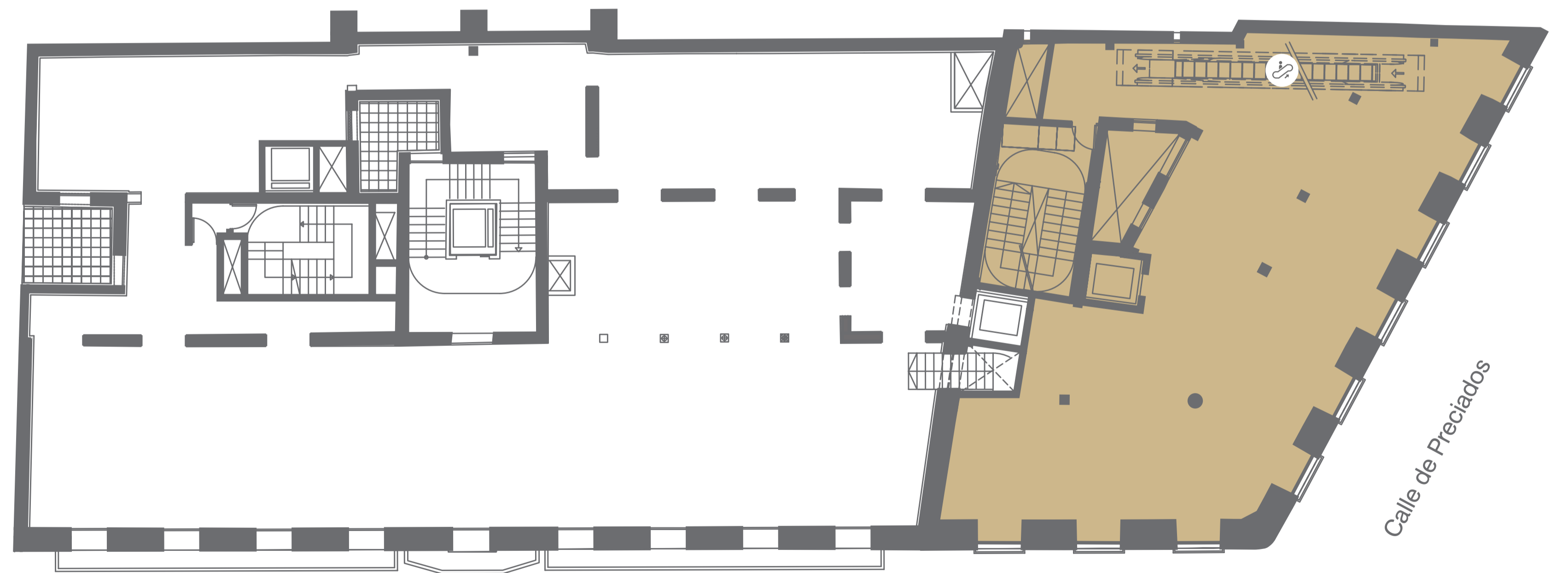
13

PRECIADOS

Hines

Vertical Unit

Second Floor



Built Area (m ²)	Vertical Unit
PR13	247,63
Total	247,63

Calle Maestro Victoria

Calle de Preciados

— Retail area ↑ Entrance ↗ Stairs 🌀 Escalator ⬆ Elevator - - - - Ground Floor

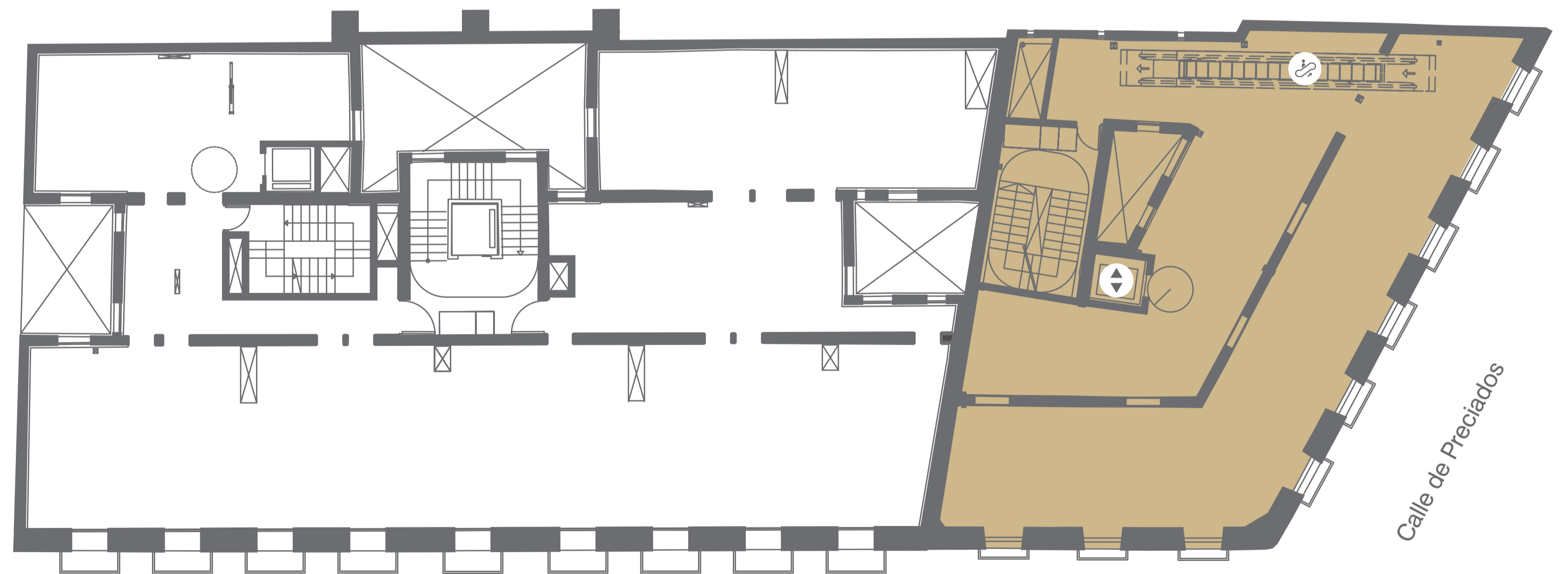
13

PRECIADOS

Hines

Vertical Unit

Third Floor



Built Area (m ²)	Vertical Unit
PR13	247,63
Total	247,63

Calle Maestro Victoria

Calle de Preciados

— Retail area ↕ Entrance ↕ Stairs Escalator ⬆ Elevator - - - - Ground Floor

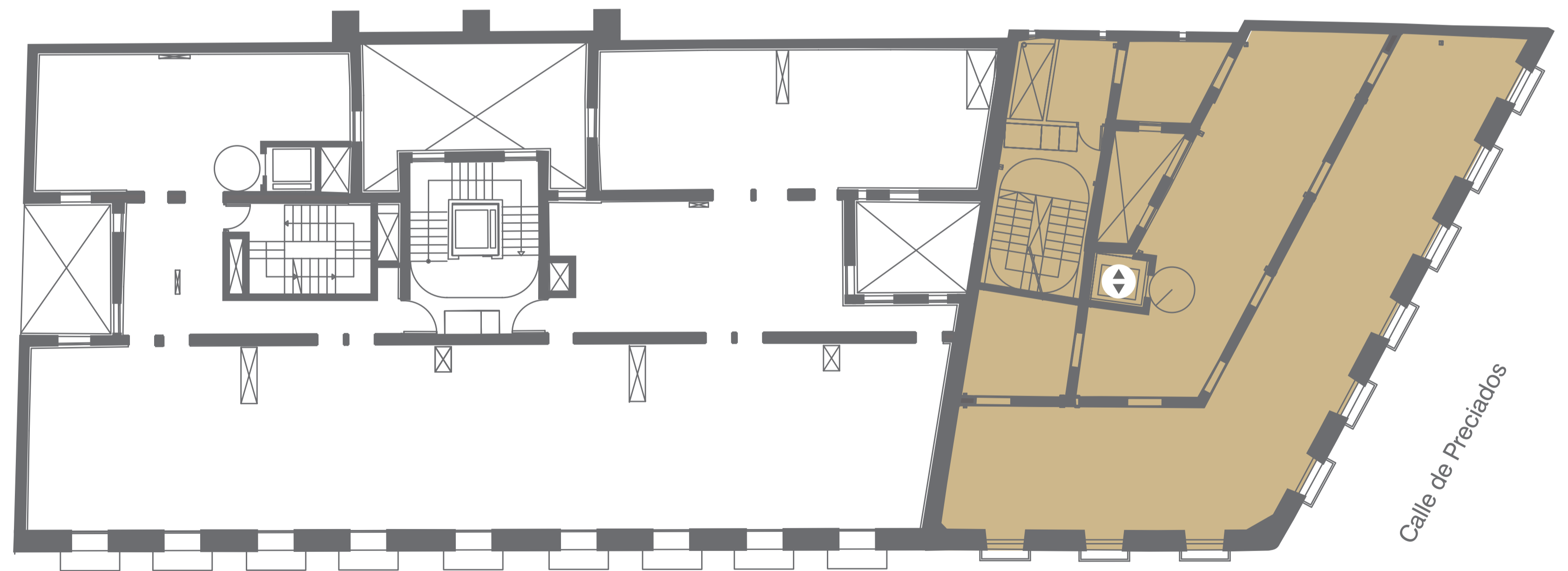
13

PRECIADOS

Hines

Vertical Unit

Fourth Floor



Built Area (m ²)	Vertical Unit
PR13	247,07
Total	247,07

— Retail area ↑ Entrance ↕ Stairs Escalator ⬆ Elevator - - - - Ground Floor

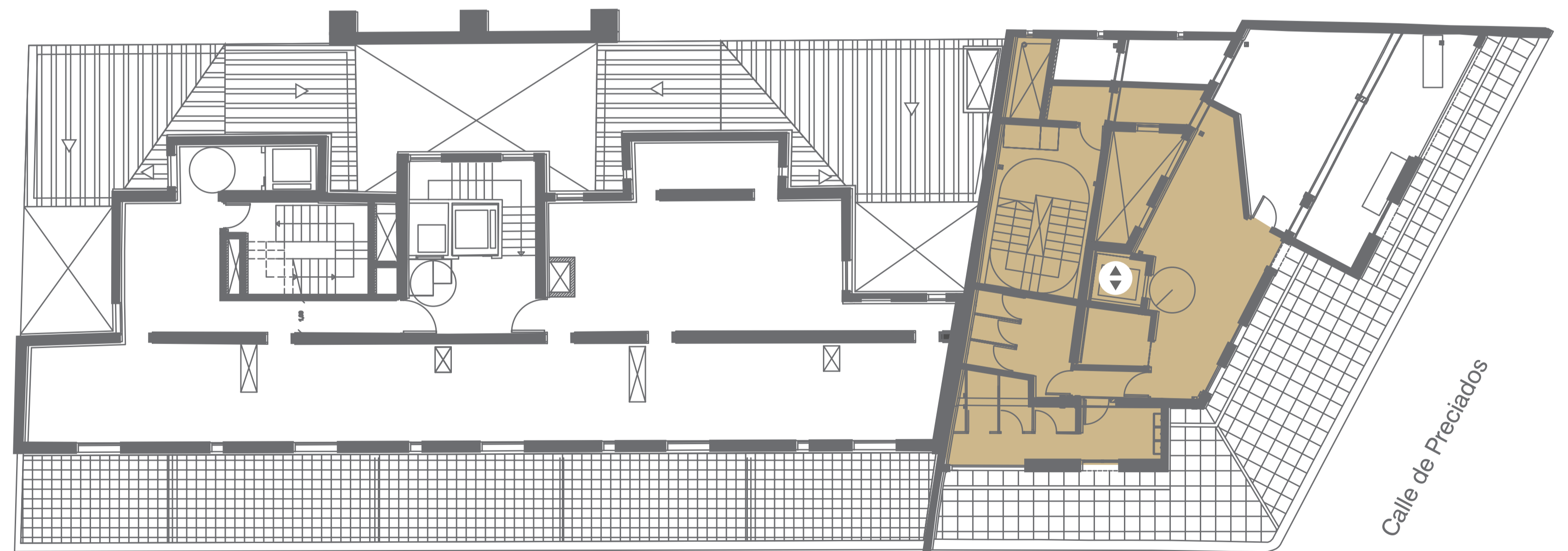
13

PRECIADOS

Hines

Vertical Unit

Fifth Floor



Built Area (m ²)	Vertical Unit
PR13	106,6
Total	106,6

Calle Maestro Victoria

Calle de Preciados

— Retail area ↻ Entrance ⚡ Stairs 🌀 Escalator ⬆️ Elevator - - - - Ground Floor